

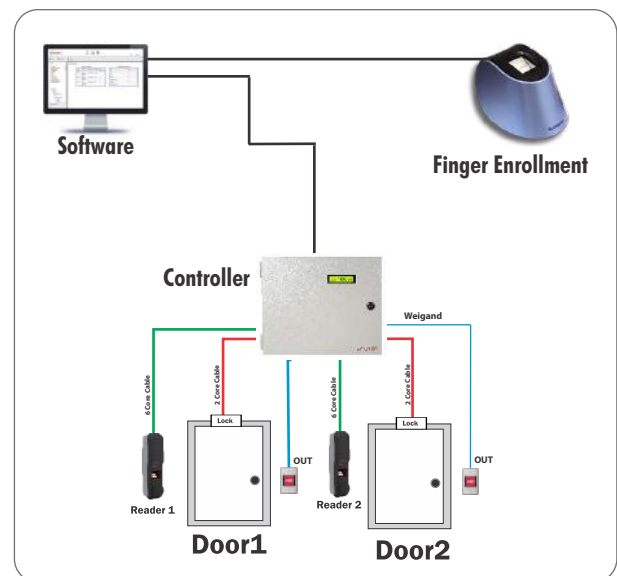
# BIOslim RID



## Major Features:

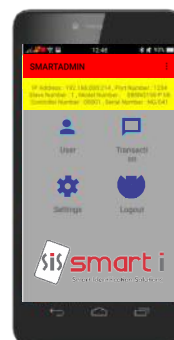
- BIOslim RID is Biometric + Card Reader with high quality scratch resistance optical sensor
- IP 65 rated sleek model which easily fits on all type of door
- Compatible with any standard Access Control Panel on standard Wiegand communication.
- Inbuilt Mifare, HID I Class, HID Prox, EM Prox Card Reader option available
- Onboard TCP/IP, bluetooth\* available for template management

## Connection Diagram



## TECHNICAL SPECIFICATIONS

Particulars	Specifications
Model No	SBSK1950-P/S/Hi/HP
CPU	ARM 32 Bit RISC Processor
Memory	Up to 8 MB (Flash)
No of Templates	Up to 19000(1:N)/(1:1)
Operation Mode	Finger only; Card + Finger
Sensor	Optical Sensor ISO19794-2, ANSI 378 template Compliant
Inbuilt Card Reader Options	Mifare ; HID iCLASS ; HID Prox ; EM
Communications Port	TCP/IP ; Weigand ; RS485
LED	Tricolor LED Bar
Power Supply	12 V DC / 5A
Enclosure	IP 65 ABS Plastic
Mounting	Wall Mounting
Dimension(LxHxW)	58 x 210 x 49 (mm)



\* Inbuilt Bluetooth with mobile app interface for finger enrollment & device configuration